



Nottingham University
Academy of Science
and Technology

NOTTINGHAM UNIVERSITY ACADEMY OF SCIENCE AND TECHNOLOGY | 2014/2015 **PROSPECTUS**



*Delivering
success through
ambition and
excellence*





Nottingham University
Academy of Science
and Technology



Contents

Welcome from the Principal	Pg 3
Turning dreams into reality	Pg 4
Applying to NUAST	Pg 6
Our offer	Pg 7
A new partnership approach to learning	Pg 10
NUAST – where the learner comes first	Pg 12
State-of-the-art facilities	Pg 13
Contact us and map	Pg 15



Welcome from the Principal



It is with great pleasure that I welcome you to *NUAST* – a new kind of Academy in the United Kingdom, which aims to deliver the best engineering, IT, science education and life skills for our future engineers, entrepreneurs and innovators.



NUAST's mission is to **'Deliver Tomorrow's Engineers, Scientists and Innovators'**, based on our Core Values of **Respect, Integrity, Teamwork and Excellence**.

The NUASt learning experience will be unique and innovative, giving you industry-recognised qualifications to ensure that you are given every opportunity to develop and succeed, whether you choose to go into employment, an apprenticeship or further/higher education. Individual learning managers and business mentors will ensure that you can put your new knowledge and skills into practice through a wide range of activities either in the work place, at The University of Nottingham, in the local community or in the Academy.

To fulfil your potential and realise your talent, make NUASt your first choice to play an important part in your future.

Ailsa A Gough

Ailsa A Gough, Principal

Outlook



Sir Harry Djanogly,
CBE

"I am delighted to be in partnership with the top-performing and world-renowned University of Nottingham.

With the deep and generous support of so many outstanding employer partners, our new academy will provide thousands of young people with meaningful skills, knowledge and qualifications and a thorough preparation for a successful career in their chosen field.

The benefits to them and to the wider economy will be of great value."

Turning dreams into reality



NUAST is an exciting new initiative aimed at fulfilling the dreams of young engineering, IT/computing and science students aged 14 to 19 years and meeting the needs of UK employers.

By studying at NUAST, you will benefit from learning through business-led projects and gaining plenty of hands-on practical experience on the road to achieving high quality academic, vocational and professional qualifications.

Opening in September 2014 and based in Nottingham, NUASt will initially offer places to students from across the East Midlands aged 14 (Year 10) and 16 (Year 12) who are passionate about engineering, science and information technology.

NUAST is co-sponsored by **The University of Nottingham** (a leading research university and member of the renowned Russell Group) and **Sir Harry Djanogly CBE** (through the Djanogly Learning Trust), who is one of the country's leading educational philanthropists.

Our lead employer partner is global engineering and electronics company **Toshiba**, which has a long history of supporting and furthering education in the UK. NUASt is also pleased to have **Central College, Nottingham** as our further education partner.

To demonstrate the truly collaborative spirit of NUASt, we are supported by a wide range of successful national and regional employers, including **Boots, Experian, Rolls Royce, Siemens** and **XMA**. Such businesses and other organisations have worked with us to develop the curriculum and identified how they will help with its delivery.

NUAST's special relationship with a wide range of employers will help develop tomorrow's business leaders and entrepreneurs.



Applying to NUASt

NUAST welcomes applications from students wishing to join from September 2014.

Year 10 entry

If you are aged 14 on 1 September 2014, you should apply for entry to Year 10 through your Local Authority's online admissions. Follow the links to the relevant forms on our website: www.nuast.org or ask us to send you a paper copy. The closing date for applications is 31 October 2013. Late applications can still be made after this date.

NUAST will operate a fair banding system for all applicants living within our 25-mile catchment area which stretches from Chesterfield and Worksop in the north to Leicester in the south and from Derby and Burton upon Trent in the west to Grantham and Newark in the east. You will be assessed using nationally recognised and independently verified reading tests and written mathematics tests to determine your ability band.

Year 12 entry

You will need at least a Grade C in GCSE English, mathematics and three other GCSE or equivalent qualifications to apply for a Level 3 course at NUASt in Year 12.

Entry to A level science and mathematics courses will also require at least a Grade B pass in GCSE mathematics. For entry to A level science courses you must also have at least a Grade B pass in two science subjects in addition to the minimum entry requirements above.

Full details of the curriculum are available on the NUASt website: www.nuast.org

Application Forms

NUAST application forms can be downloaded from the website: www.nuast.org. You can also request a copy by emailing enquiries@nuast.org or phoning 0115 942 1202. Alternatively write to NUASt at:

Ailsa A Gough
Principal
NUAST
c/o Djanogly House
6 Sherwood Rise
Nottingham
NG7 6JF

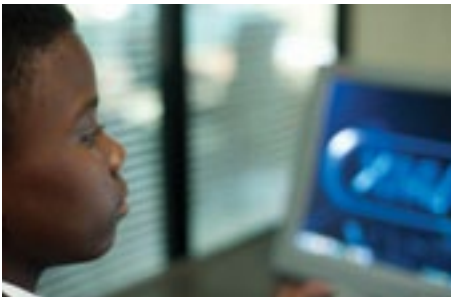


NUAST will operate a fair banding system for all Year 10 applicants living within our 25-mile catchment area.

Our offer

NUAST specialist subjects will open up a world of opportunities.

NUAST will become a beacon of educational excellence in the East Midlands, by providing first-class technological and academic education, showcasing collaboration with business and transforming the supply of a skilled workforce to local, regional and national businesses.



Whether you want to go straight into work, achieve a vocational qualification through an apprenticeship or go on to study further at university, NUAST will help you to make the most of every opportunity. A core curriculum is at the heart of NUAST's offer; GCSE English, mathematics, science and a modern language will be fully integrated into the specialist science, engineering and information technology programmes.

As a student at NUAST, you will have a head start over many other young people because the subjects you will study are in such high demand and your experiences at NUAST will ensure that you are ready to meet the challenges of work.

Outlook

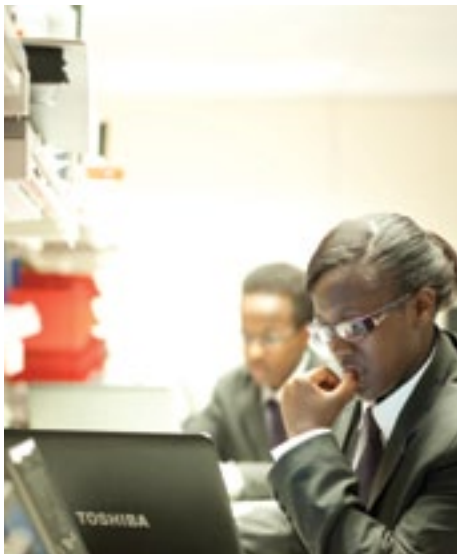


Len Daniels,
*Strategic Development
Manager, Education*

"Toshiba is excited by the opportunity the Nottingham University Academy of Science and Technology will provide for the young people of Nottingham and the East Midlands region. Toshiba has vast experience, on a global scale, of forming and developing partnerships with schools and colleges to enhance learning and to help to raise levels of achievement and attainment.

We look forward to being an integral part of the Nottingham University Academy of Science and Technology."

NUAST students will see the value of core GCSE subjects and how they help to bring their specialist subjects to life.



Add to this the business challenges you will undertake and we are confident that you will be equipped to take full advantage of future employment and higher education opportunities.

Year 10 students

All students joining in Year 10 will study for GCSEs in English, maths, biology, physics, chemistry, a modern language and either history or geography. Gifted and Talented students will also be able to take GCSEs in English literature and statistics and the more challenging international GCSEs (IGCSEs). NUAST will also adopt policies and procedures to enable students with Special Educational Needs and other individual needs to reach their full potential and to be included fully in the NUAST community. As well as these academic GCSEs, all students will choose an optional pathway in either engineering or IT/computing. Each pathway will lead to a further three or four GCSEs or equivalents.

You will also gain practical industry-recognised qualifications and experiences which will be invaluable for anyone staying on into the Sixth Form or undertaking university study, higher apprenticeships or employment.

Year 12 students

Students joining NUAST in Year 12 can choose to study one of the following:

STEM subject A levels or Cambridge Pre-University qualifications, with an emphasis on science, computing and maths subjects; or

BTEC, Level 3 Extended Diploma in engineering (worth three A levels) with additional industry-recognised practical qualifications and experiences; or

BTEC Level 3 Extended Diploma in IT (worth three A levels) with additional industry-recognised practical qualifications and experiences.

Each option includes a Level 3 extended project worth half an A level.

NUAST will provide opportunities for everyone,
including Gifted and Talented students



Science-based

Chemical engineers
Environmental scientists
Food scientists
Forensic scientists



Engineering-based

Aerospace engineers
Electrical and electronics engineers
Mechanical engineers
Engineering technicians



IT-based

Computer programmers
Systems analysts
Network managers
Web designers

These qualifications will open up
a world of career opportunities.

Further details of the
curriculum are published
on the Academy website
www.nuast.org

Outlook



Yultan Mellor,
Vice Principal Curriculum

“Central College Nottingham are pleased to be NUAST’s further education partner. We look forward to supporting a complementary provision enabling students to access to a broad STEM offer across the two organisations. Together we aim to develop clear progression pathways that are appropriate to the needs of students, employers and the local economy.”

A new partnership approach to learning

The transition from school to work can be daunting; a longer day and a professional working environment will take a while to get used to. However, to help you make the change from your current school to NUASt you will have a learning manager to support you and monitor your progress and be the first point of contact for your parents/carers.

At NUASt, we believe that having a longer day will best prepare you for your future. The day starts at 8.30am and finishes at 5pm. However, that does not mean you will spend all of your time in the classroom.

Practical working is an important part of the NUASt experience, so you will also visit our employer partners and be involved in enrichment activities, which will include Adventurous Training, Duke of Edinburgh Awards, learning a foreign language and Young Engineer of the Year.

NUAST will expect you to behave in a professional manner, as you would in the workplace, which is why we have the same rules for students as we do for staff.

As a NUASt student you will be expected to dress smartly and take pride in your appearance; the business-style uniform will be worn at all times at NUASt and for any outside visits.



outlook

 The University of Nottingham

Professor David Greenaway,
Vice Chancellor

“Encouraging and inspiring young people to aim high and achieve their very best is vital for their success, be that in employment or further or higher education. That is the reason why the University is co-sponsoring NUASt. Through this innovative venture, we aim to improve routes into science and technology for young people across the region, in turn providing employers with a skilled workforce for the future.”

The NUASt learning experience will combine professional and life skills to help you succeed in your chosen career.



NUAST – where the learner comes first

Our teaching reflects a range of learning styles, including project-working, individual tasks, group assignments and class-based activities.



You will be supported by mentors from the world of business, industry and higher education, who can provide valuable insights, encouragement and feedback to help you in your studies – whether you are in Year 10 or Year 12.

NUAST's strong emphasis on mixing core curriculum subjects with specialist STEM areas, studied over a longer day and providing more practical experience, is combined with a truly supportive environment.

We understand that there is no such thing as 'off the peg' teaching and learning. Some of you will work better by taking a purely collaborative approach, through shared or group working, whilst others will prefer a more individual approach, with a strong focus on achieving goals on your own. Whatever your preferred way of learning, NUAST will provide you with a wide range of support.

The Academy prides itself on being inclusive, providing for a wide range of abilities and talents. NUAST will develop learning, teaching and additional support programmes to enable every student who has the aptitude and commitment for our specialisms in engineering, IT/ computing and science to succeed.

High levels of value-added progress for all students will be possible through high quality teaching, using differentiation and assessment for learning strategies, as well as through support for the individual education needs of all students, including our Gifted and Talented students.

State-of-the-art facilities

NUAST is based in a new purpose-built facility in Nottingham, within a thriving community, easily accessed by public transport.

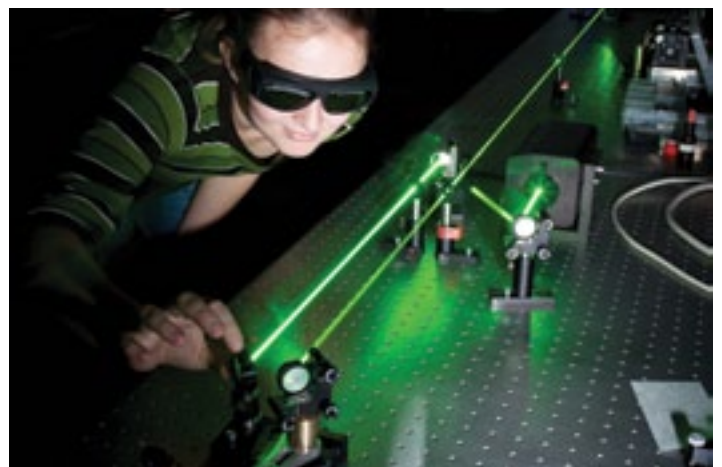


Incorporating state-of-the-art equipment and facilities, the new building is on Abbey Street, Dunkirk, near The University of Nottingham's University Park Campus, the Nottingham ring road and the Queen's Medical Centre. For students travelling into Nottingham from within our 25-mile catchment area, the new tram service will provide easy access, particularly from Nottingham train station.

You will use well-equipped laboratories, workshops, study areas and social areas within the building, including a large dining room and break-out area.

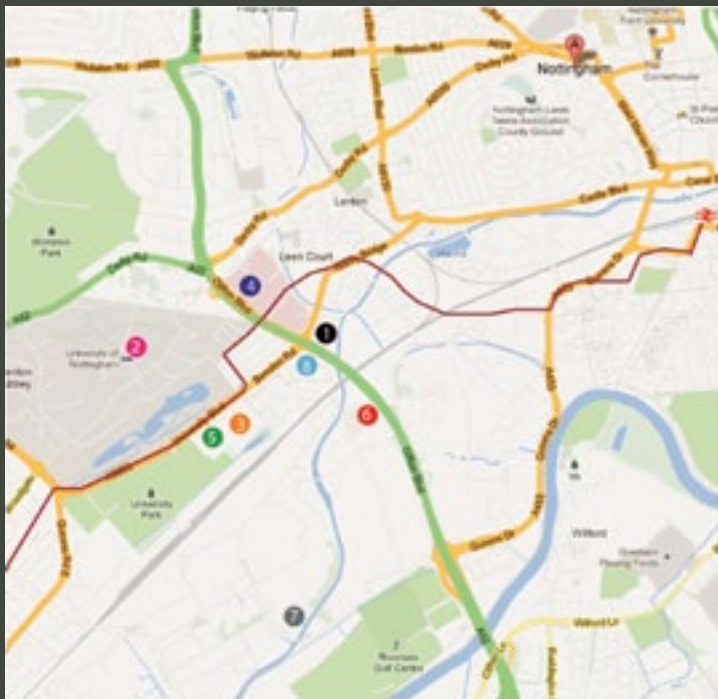
You will also have access to a wide range of first-class facilities provided by our sponsors and business partners around the sub-region for your work-based projects and assignments.

This includes Toshiba's Regional Training and Technology Innovation Centre. NUAST also has a flood-lit multi-use games area for use during and after school hours.





How to find us



- 1 Nottingham University Academy of Science and Technology
- 2 The University of Nottingham main campus
- 3 Nottingham Science Park
- 4 Queens Medical Centre
- 5 Tennis Centre
- 6 Showcase Cinema
- 7 Boots Head Office
- 8 Dunkirk Primary and Nursery School
-  Nottingham Train station
-  Tram Line (NET Phase 2 - completion 2014)

Contact us

We welcome enquiries, whether from prospective students, parents, carers, prospective business partners or the general public.

Please contact us at: enquiries@nuast.org

NUAST
c/o Djanogly House
6 Sherwood Rise
Nottingham
NG7 6JF
Tel: 0115 942 1202

Further information about the Nottingham University Academy of Science and Technology is published on our website www.nuast.org including the curriculum, our partners, examples of the types of projects our students will work on and details of the uniform.

Acknowledgments

Uniforms kindly loaned by Price & Buckland.

Photographs taken on location at The University of Nottingham and at XMA.

Prospectus designed and produced by Liv Design .



Nottingham University
Academy of Science
and Technology

NOTTINGHAM UNIVERSITY ACADEMY OF SCIENCE AND TECHNOLOGY | 2014/2015 PROSPECTUS



Proudly supported by



The University of
Nottingham

UNITED KINGDOM • CHINA • MALAYSIA



Djanogly
Learning Trust



Experian
A world of insight

